

# Customer Information Sheet

DRAWING No.: S1791-42R

SHEET 2 OF 2

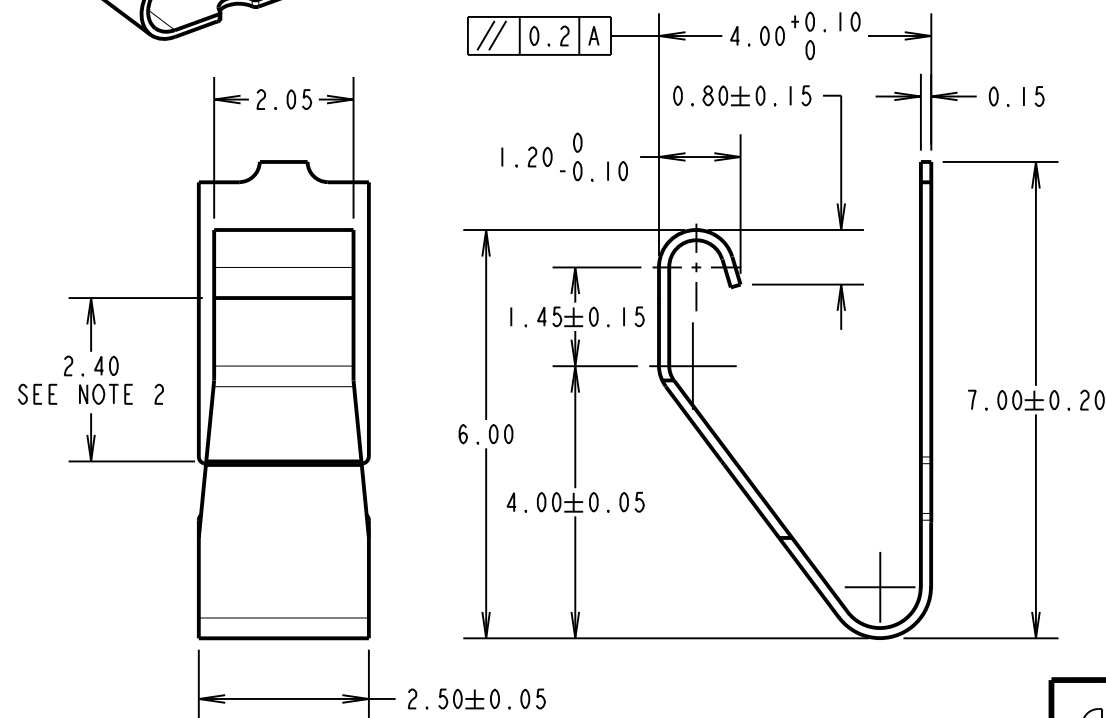
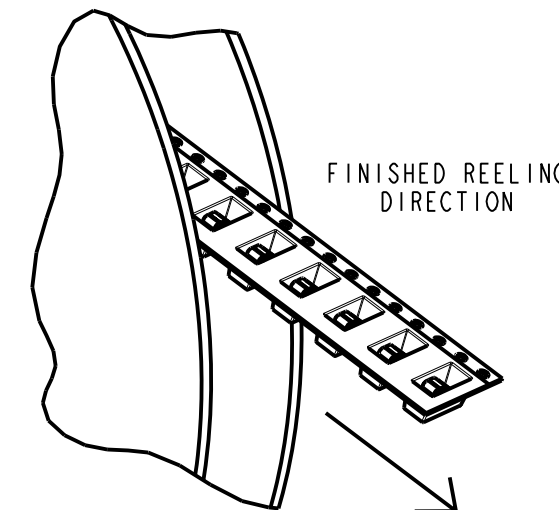
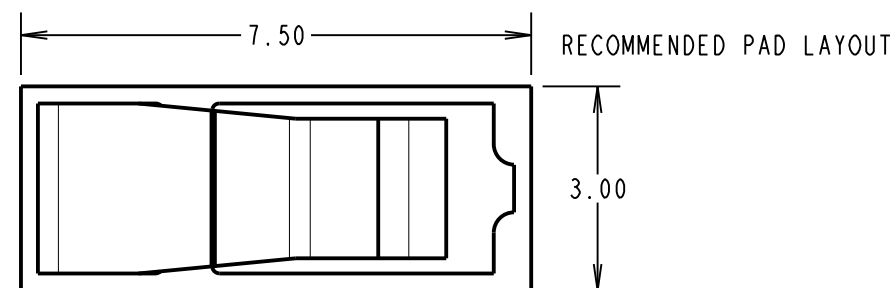
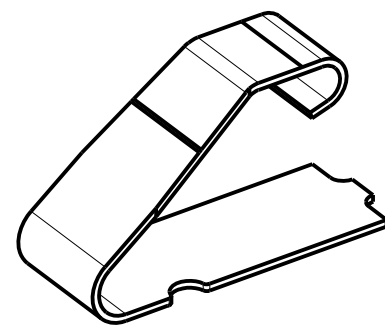
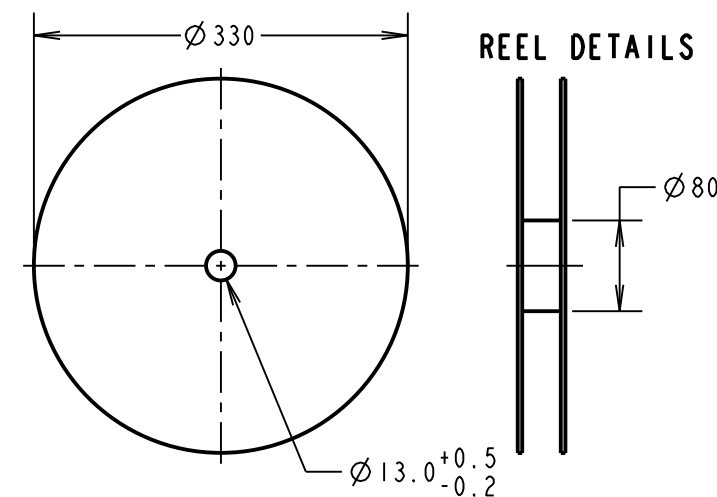
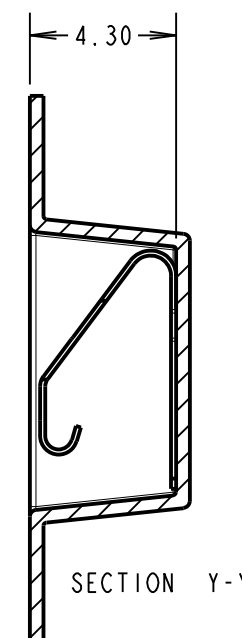
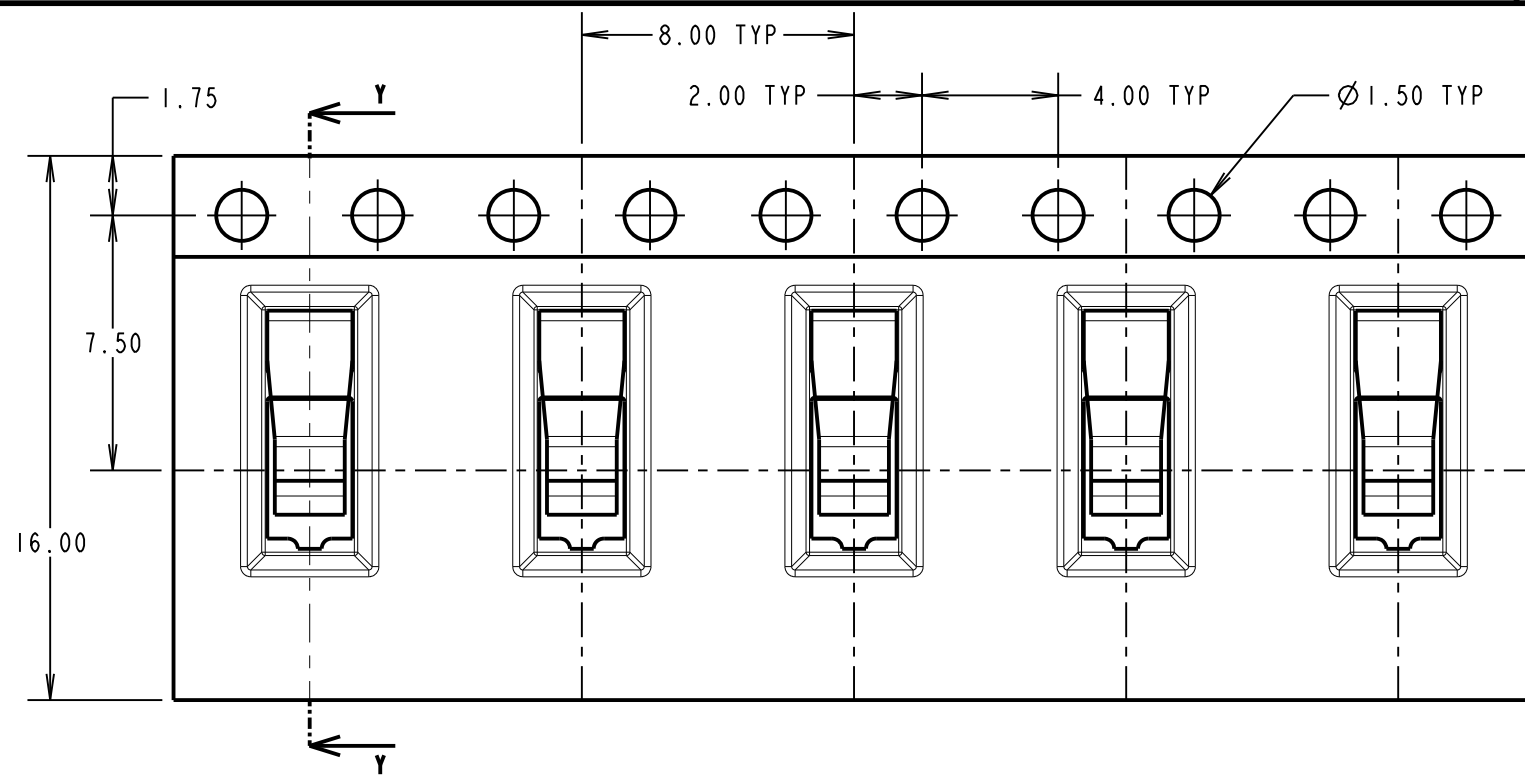
IF IN DOUBT - ASK

©

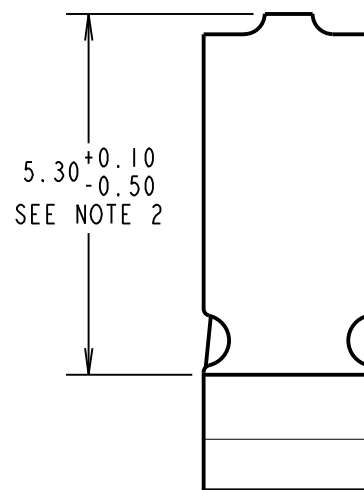
NOT TO SCALE

THIRD ANGLE PROJECTION

ALL DIMENSIONS IN mm



## COMPONENT DETAILS



- NOTES:  
 1. QUANTITY PER REEL = 2000.  
 2. GOLD PLATED AREA.

**COMPONENT SPECIFICATION:**  
 MATERIAL = TITANIUM COPPER ALLOY,  
 0.15 ± 0.01mm THICK  
 FINISH = 0.76µ - 1.27µ NICKEL, 0.05µ MIN GOLD FLASH  
 ON CONTACT AND FOOT AREA.  
 RECOMMENDED WORKING HEIGHT = 3.00mm / MIN FORCE = 1.0N  
 MINIMUM WORKING HEIGHT = 2.00mm / MAX FORCE = 4.0N  
 ELECTRICAL:  
 CURRENT RATING = 3A  
 MECHANICAL:  
 DURABILITY = 1500 CYCLES  
 ENVIRONMENTAL:  
 OPERATING TEMPERATURE = -55°C TO +125°C

SB	6	22.11.13	12234
NAME	ISS.	DATE	C/NOTE
APPROVED: S.BENNETT			
CHECKED: S.FLOWER			
DRAWN: N. CODLING			
CUSTOMER REF.:			
ASSEMBLY DRG:			

# HARWIN

www.harwin.com  
 technical@harwin.com

THIS DRAWING AND ANY INFORMATION OR DESCRIPTIVE MATTER SET OUT HEREON ARE CONFIDENTIAL AND COPYRIGHT PROPERTY OF THE HARWIN GROUP AND MUST NOT BE DISCLOSED, LOANED, COPIED OR USED FOR MANUFACTURING, TENDERING OR FOR ANY OTHER PURPOSE WITHOUT THEIR WRITTEN PERMISSION.

**TOLERANCES**  
 X. = ±1mm  
 X.X = ±0.25mm  
 X.XX = ±0.10mm  
 X.XXX = ±0.01mm  
 ANGLES = ±5°  
 UNLESS STATED

**MATERIAL:**  
 SEE ABOVE  
**FINISH:** SEE ABOVE  
**S/AREA:** mm<sup>2</sup>

**TITLE:**  
 S1791-42 EMI SHIELD FINGER  
 IN TAPE AND REEL

**DRAWING NUMBER:**  
 S1791-42R

SHT  
 2 OF 2