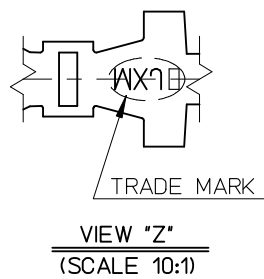
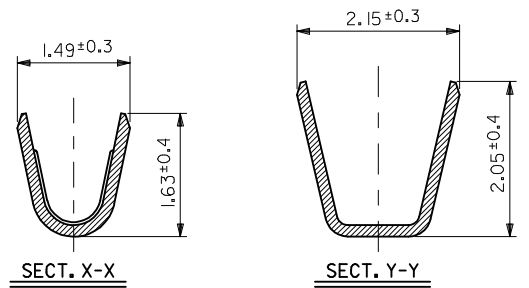
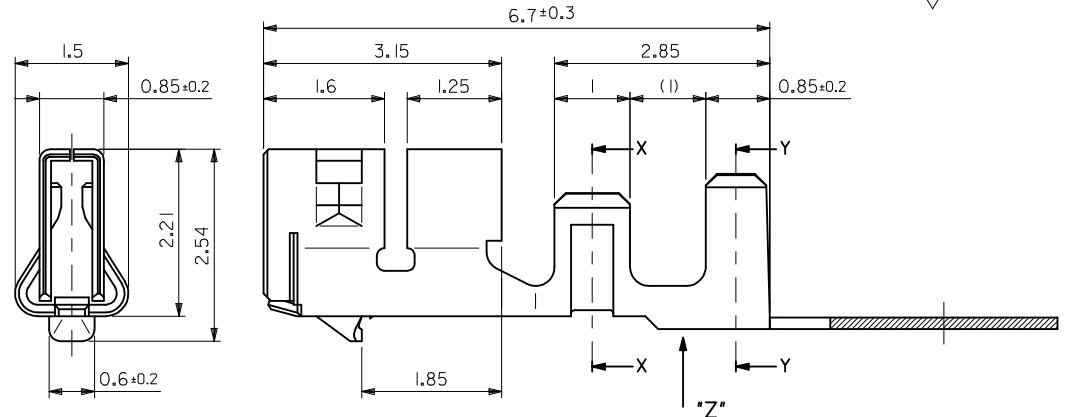


注記
NOTES

1. 使用材料 : リン青銅、錫メッキ (t=0.15)
MATERIAL : PRE-TINNED PHOSPHOR BRONZE
2. 適合ハウジング : 51216シリーズ
APPLICABLE HOUSING : 51216 SERIES
3. トレードマーク : MXプラス1文字の製造工場を示すアルファベットにて表示。
但し"J"はJAPANを示す (MXJ)
FORMED BY MX AND 1 MORE LETTER OF ALPHABET WHICH MEAN THE MANUFACTORY.
BUT "J" MEANS JAPAN. (TO TRADE MARK) (e.g. MXJ)
4. 適用電線 : AWG #22-#28
APPLICABLE WIRE : AWG #22-#28
5. 被覆外径 : $\phi 1.5\text{mmMAX}$
INSULATION OUTSIDE DIMENSION : $\phi 1.5\text{mmMAX}$
6. 圧着仕様については、圧着仕様書 CS-59370-003を参照願います。
PLEASE REFER TO CRIMPING SPECIFICATION CS-59370-003
7. ELV及びRoHS適合品
ELV and RoHS COMPLIANT
8. ATS-57427-0000 圧着視覚教材を参照願います。
PLEASE REFER TO CRIMPING AID ATS-57427-0000.



$\phi 1.5\text{mmMAX}$	AWG #22-#28	593708100	バラ状 LOOSE
		593708000	連鎖状 CHAIN
絶縁被覆外形範囲 INS. RANGE	適用電線範囲 WIRE RANGE	製品番号 MATERIAL NO.	端子形状 FROM

REVISED EC NO: J2017-0098 DRW: KYAMADA02 2016/08/25 CHK: KASAKAWA 2016/08/30 APPR: KANEKO 2016/09/02 DESCRIPTION A	GENERAL TOLERANCES (UNLESS SPECIFIED)		DIMENSION STYLE MM ONLY		SCALE 15:1	DESIGN UNITS METRIC		THIRD ANGLE PROJECTION
	0.25 UNDER	UNDER	±0.03	DRAWN BY T. YASUI	DATE 1999/12/09	TITLE 2.0 WIRE TO BOARD CONN. CRIMP RECEPTACLE		
	0.25 OVER	0.5 UNDER	±0.05	CHECKED BY YAMAGUCHI	DATE 1999/12/09			
	0.5 OVER	1.0 UNDER	±0.1	APPROVED BY	DATE			
	1.0 OVER	10 UNDER	±0.2	MATERIAL NO.				
10 OVER	30 UNDER	±0.25	SIZE A3		THIS DRAWING CONTAINS INFORMATION THAT IS PROPRIETARY TO MOLEX ELECTRONIC TECHNOLOGIES, LLC AND SHOULD NOT BE USED WITHOUT WRITTEN PERMISSION			
30 OVER		±0.3	DRAFT WHERE APPLICABLE MUST REMAIN WITHIN DIMENSIONS					