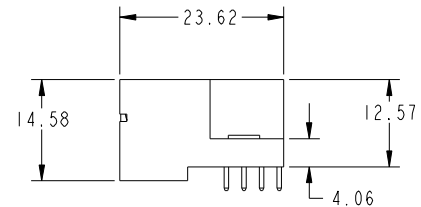
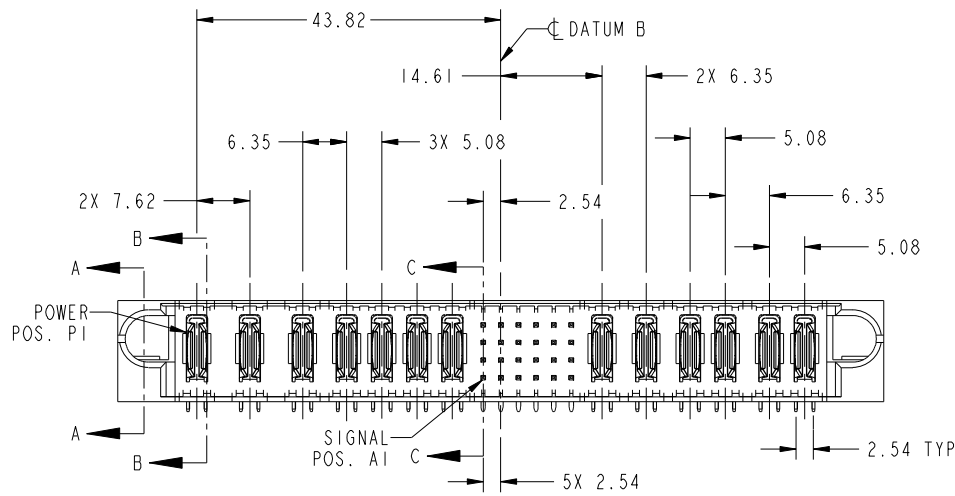
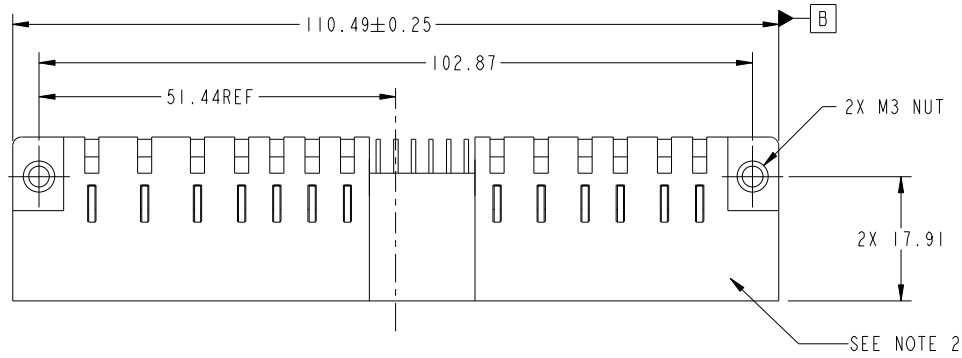


Tous droits strictement reserves. Reproduction ou communication a des tiers interdite sous quelque forme que ce soit sans autorisation écrite du propriétaire. Propriete de c FCI. Droits de reproduction FCI.



All rights strictly reserved. Reproduction or issue to third parties in any form whatever is not permitted without written authority from the proprietor. Property of FCI. Copyright FCI.

PRODUCT NUMBER
51907-004--
NOTE: 3



mat'l code				NOTE 1		tolerances unless otherwise specified		CUSTOMER		FCI	
ltr	ecn no.	dr	date	linear	0.X ± 0.5	COPY		projection		www.fciconnect.com	
A	DG05-0310	GuoJM	09/02/05		0.XX ± 0.25	title		3ACP+4P+24S+6P		code	
B	DG06-0005	JMG	01/06/06		0.XXX ± 0.10	angles		RIGHT ANGLE SOLDER HEADER		213	
C	DG08-0272	JW	09/28/08		0° ± 2°	product family		PwrBlade		sheet	
				dr	JM Guo 09/02/05	INCMM MM		size		1 of 3	
				enr	LUOS 09/02/05	scale		dwg no		213	
				chr	VICTOR LIN 09/02/05	1:1		51907-004		sheet	
				appd	JOSEPH HSIA 09/02/05					1 of 3	
sheet index	revision sheet	C 1	C 2	C 3							

cage code 22526

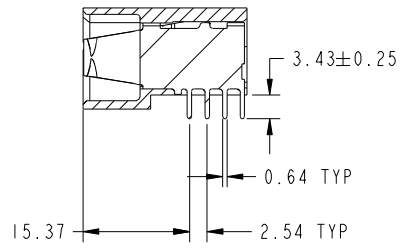
Pro/E

Tous droits strictement reserves. Reproduction ou communication a des tiers interdite sous quelque forme que ce soit sans autorisation écrite du propriétaire. Propriete de c FCI. Droits de reproduction FCI.

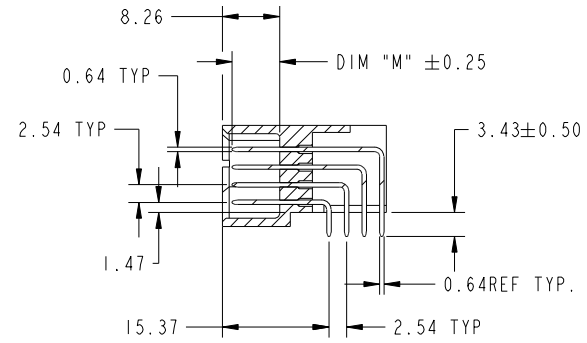


All rights strictly reserved. Reproduction or issue to third parties in any form whatever is not permitted without written authority from the proprietor. Property of FCI. Copyright FCI.

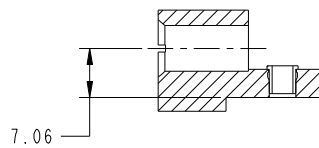
PRODUCT NUMBER
51907-004_-
NOTE: 3



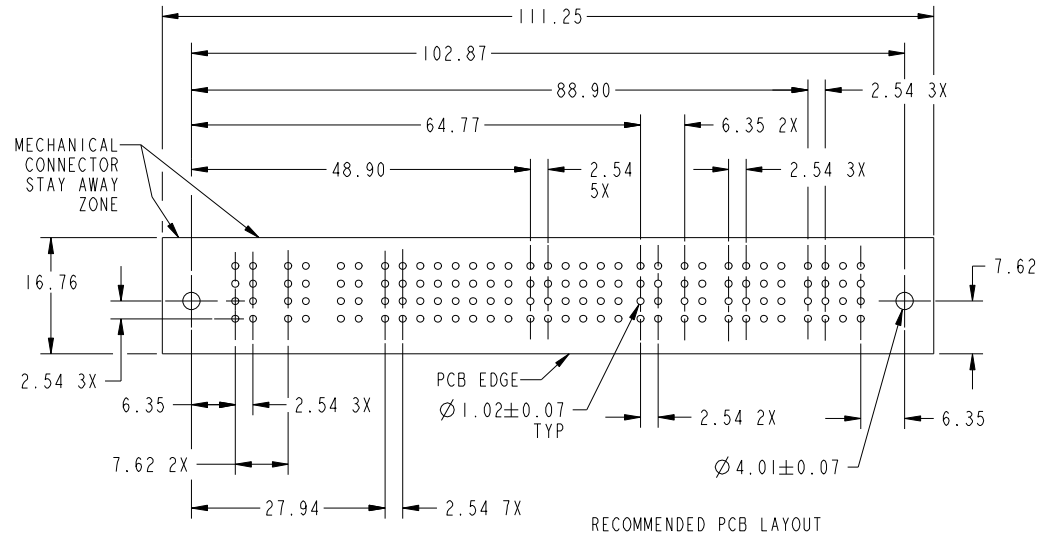
SECTION B-B
SCALE 1:1



SECTION C-C
SCALE 1:1



SECTION A-A



mat'l code		NOTE 1		tolerances unless otherwise specified		CUSTOMER		FCI	
ltr	ecn no.	dr	date	linear	0.X ±0.5	COPY		www.fciconnect.com	
C					0.XX ±0.25	projection		title	
				angles	0.XXX ±0.10			3ACP+4P+24S+6P RIGHT ANGLE SOLDER HEADER	
				dr	JM Guo 09/02/05	INCMIM MM		product family	PwrBlade
				enrg	LUOS 09/02/05	scale		size	code
				chr	VICTOR LIN 09/02/05	1:1		dwg no	213
				appd	JOSEPH HSIA 09/02/05			51907-004	sheet
sheet index	revision sheet								2

cage code 22526

Pro/E

Tous droits strictement reserves. Reproduction ou communication a des tiers interdite sous quelque forme que ce soit sans autorisation écrite du propriétaire. Propriete de c FCI. Droits de reproduction FCI.



All rights strictly reserved. Reproduction or issue to third parties in any form whatever is not permitted without written authority from the proprietor. Property of FCI. Copyright FCI.

PRODUCT NUMBER		1 2														3														4	
51907-004_- NOTE: 3		PRODUCT No.	ROWS	POWER							SIGNAL							POWER													
		51907-004_- NOTE: 3	D C B A	E1	P1	P2	P3	P4	P5	P6	P7	1	2	3	4	5	6	P8	P9	P10	P11	P12	P13	E2							

CODE	DIM "M" MATING LENGTH	CONTACT TYPE
PA	[N/A]	POWER
R	[6.86]	SIGNAL
S	[6.86]	SIGNAL
T	[6.86]	SIGNAL
U	[6.86]	SIGNAL
E	[5.59]	SIGNAL

CONNECTOR NOTES:

- HOUSING MATERIAL: UL 94 V-0 GLASS FILLED HIGH-TEMP THERMOPLASTIC
SIGNAL PIN MATERIAL: COPPER ALLOY
POWER CONTACT MATERIAL: COPPER ALLOY
- MANUFACTURER'S NAME, P/N, AND DATE CODE TO APPEAR ON THIS SURFACE
- PLATING:
SEE ITEM 1 & 2 IN PRINT 10064183 FOR PLATING SPEC OF 51907-004; 51907-004LF PRESPECTIVELY
- PRODUCT SPECIFICATION GS-12-149 PER GS-01-001

PCB NOTES:

- ALL DIMENSIONS ARE BASIC UNLESS OTHERWISE SPECIFIED.
- ALL THROUGH HOLES ARE LOCATED WITH A TRUE POSITION OF 0.10
- ALL HOLE DIAMETERS ARE FINISHED HOLE SIZE
- Ø 4.01 THROUGH HOLES ARE UNPLATED
- Ø 1.151 ± 0.025 DRILLED HOLES PLATED WITH 0.008 MIN SnPb OR Sn OVER 0.03 TO 0.08 Cu PLATING TO ACHIEVE Ø 1.02 ± .07 HOLE.
- A SYMBOL WILL BE NEXT TO ANY DIMENSION, VIEW, OR NOTE WHICH HAS BEEN MODIFIED WITH THE CURRENT DRAWING REVISION.

mat'l code		NOTE 1		tolerances unless otherwise specified		CUSTOMER				www.fciconnect.com	
ltr	ecn no.	dr	date	linear	0.X ± 0.5	COPY		projection		title	
C					0.XX ± 0.25					3ACP+4P+24S+6P RIGHT ANGLE SOLDER HEADER	
				angles	0.XXX ± 0.10					product family PwrBlade code	
				dr	0° ± 2°	JM Guo 09/02/05		INCMIM MM		213	
				enrg		LUOS 09/02/05		scale		size dwg no	
				chr		VICTOR LIN 09/02/05		1:1		A 51907-004 sheet	
				appd		JOSEPH HSIA 09/02/05				3	
sheet index	revision sheet										

1 | 2 Pro/E 3 | cage code 22526 4