

Alternative Connectors

.FME (female)

P/N: W522M2-(58)-FE-AMPS/PCS

.Mini-U Plug(male)

P/N: W522M2-(58)-MU-AMPS/PCS

Alternative Frequency Band GSM/DCS

.SMA Plug(male)

P/N: W522M2-(58)-AM-GSM/DCS

.FME (female)

P/N: W522M2-(58)-FE-GSM/DCS

.Mini-U Plug(male)

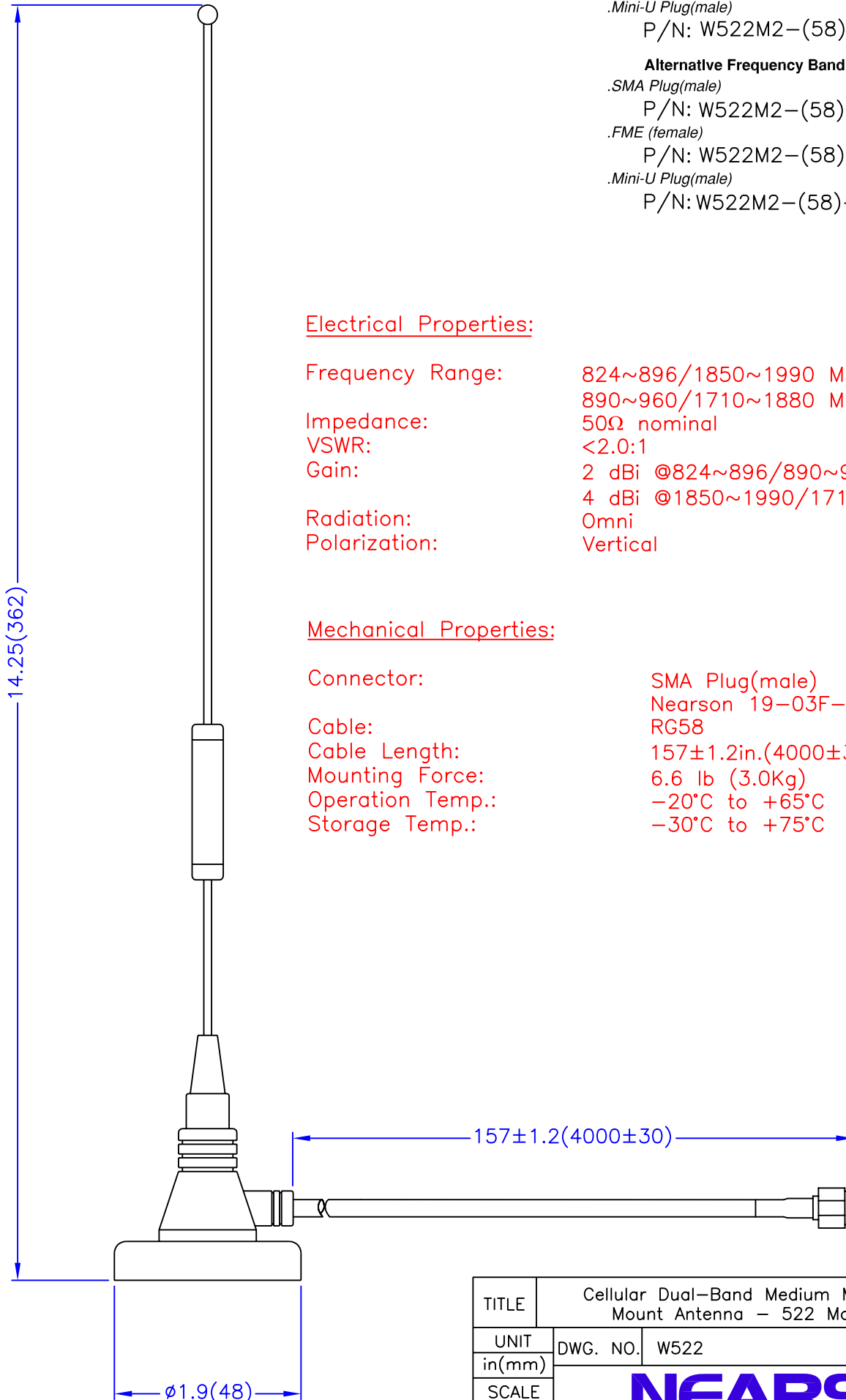
P/N: W522M2-(58)-MU-GSM/DCS

Electrical Properties:

Frequency Range: 824~896/1850~1990 MHz (AMPS/PCS)
 890~960/1710~1880 MHz (GSM/DCS)
 Impedance: 50Ω nominal
 VSWR: <2.0:1
 Gain: 2 dBi @824~896/890~960 MHz
 4 dBi @1850~1990/1710~1880 MHz
 Radiation: Omni
 Polarization: Vertical

Mechanical Properties:

Connector: SMA Plug(male)
 Nearson 19-03F-TGG
 Cable: RG58
 Cable Length: 157±1.2in.(4000±30mm)
 Mounting Force: 6.6 lb (3.0Kg)
 Operation Temp.: -20°C to +65°C
 Storage Temp.: -30°C to +75°C



TITLE		Cellular Dual-Band Medium Magnet Mount Antenna - 522 Model		SHEET	
				1 of 1	
UNIT	DWG. NO.	W522			A4
in(mm)					
SCALE	NEARSON				
none					